

La Bohème Saloon

Saloon

The saloon is the heart of this vessel. It's huge, open and full of light. The ceiling is 2.7m high, with a floorspace big enough for dancing, or throwing a party for 50 people. The large serving hatch through to the galley further enhances the impression of overall size. The galley and saloon were originally cargo holds, used for taking 30-ton loads of cut stone to Germany.

Its massive oak coamings have been retained as a feature, complete with their original iron fittings. The vessel's original carving is still visible: RN 7969

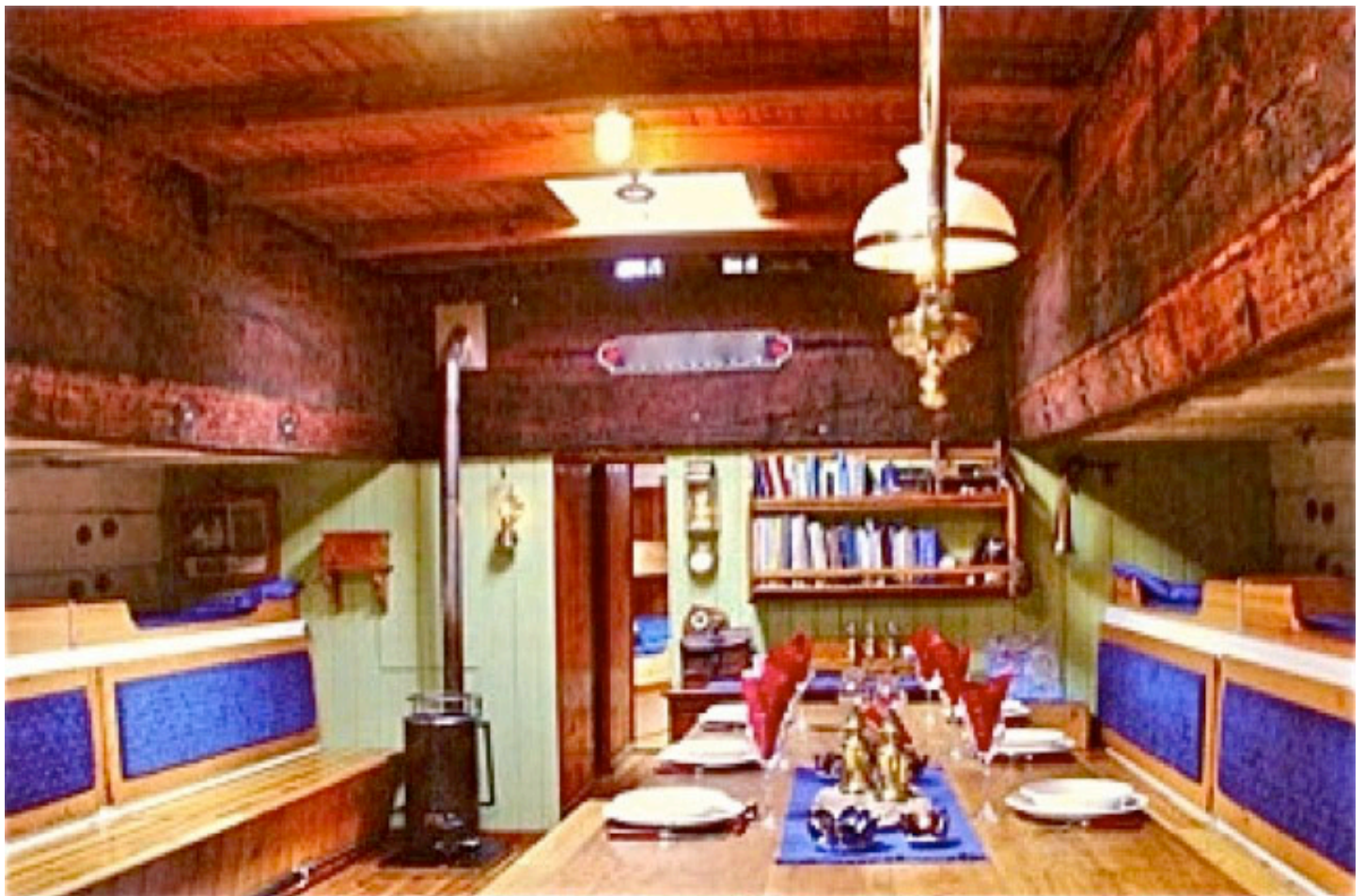
There are six bunks with large storage arranged along each side.

Centrally placed is a tailor-made oak table that can seat up to 20.

At the forward bulkhead is an old captain's office desk and chair with bookcase.

An oil heater pumps hot water through pipes in saloon and cabins.

1. General layout of saloon



2. Ideal for intimate dinner with friends



3. Or a big celebration dinner with crew, after the race



4. Big enough for dancing, in case visiting crew call in



5. Big enough for a party of 50



6. The original registry number RN 7969, carved into the solid oak coaming timbers, in 1913



7. Original iron hatch beam housings



8. Original iron structural bolts, with heads hand-peened during construction in 1913



9. All brass components: skylight & secure winder, vents and oil lamp
10. Ceiling feature oil lamp in detail



11. Saloon skylight, hinged at the forward edge. Note winter blue canopy above
12. Oil heater control box

